

Neenah R-4990-KA2 Airport

Series

R-4990-KA2

Cut Sheet

34" Wide Airport Bolted

34" Wide NEENAH Airport Bolted Extra Heavy Duty Trench Drain Grates and Frames

Product ID: R-4990-KA-2



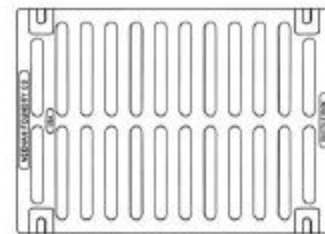
34" Wide Airport Neenah R-4990-KA-2 Series Trench Grate and Frame

Frame is included - Please call if only Grate is needed.

Catalog No.	A	B	C	Grate Matl.
R-4990-AA	8	2	6	Gray Iron
R-4990-BA	10	2	8	Gray Iron
R-4990-CA	12	2	10	Ductile Iron
R-4990-DA **	14	2	12	Ductile Iron
R-4990-EA *	17	2	15	Ductile Iron
R-4990-FA *	20	2	18	Ductile Iron
R-4990-HA *	26	2	24	Ductile Iron
R-4990-KA2 *	34	2	31	Ductile Iron
R-4990-OA *	51	2	48	Ductile Iron

* Type D solid cover available.

** Type C grate available.



TYPE "A"
GRATE OPENINGS

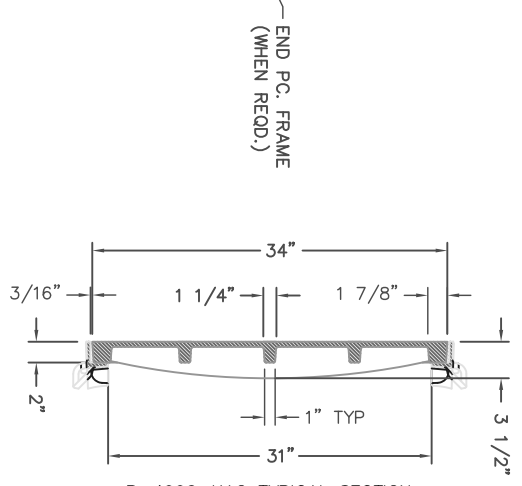
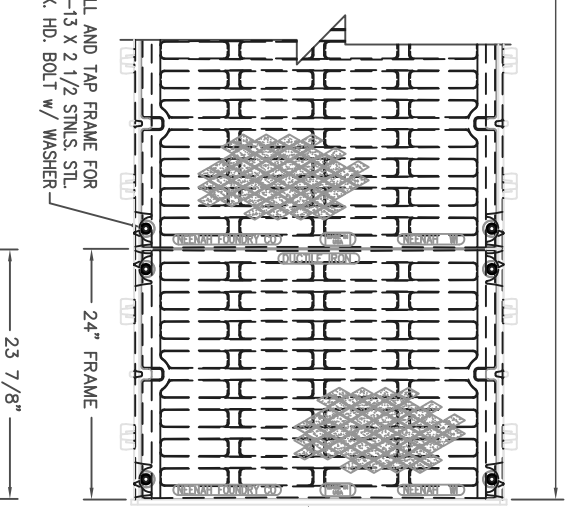
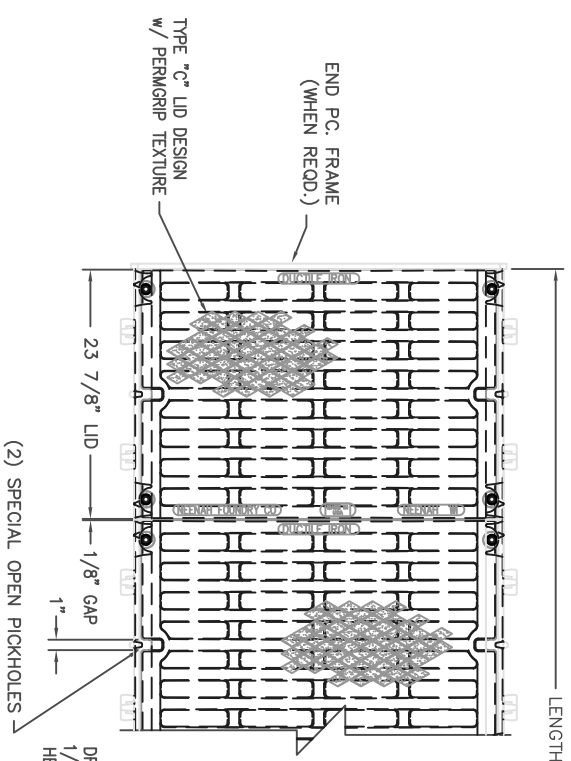
These trench drains are capable of supporting the heavy wheel loads of today's commercial environments. Grates are bolted to gray iron frames.

Suitable for aircraft loading per FAA Advisory Circular AC150/5320-6D.

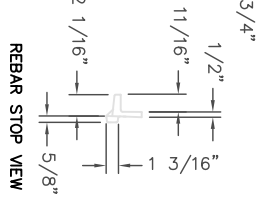
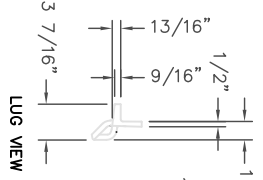
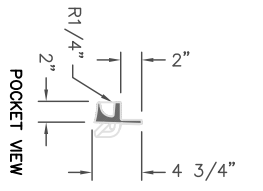
Gray iron furnished per ASTM-A48 Class 35B.

Ductile Iron furnished per ASTM A536 Grade 80-55-06.





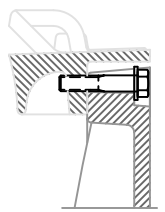
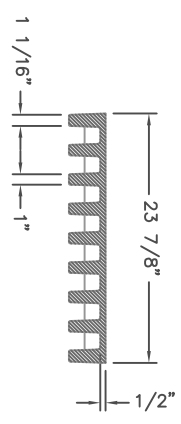
R-4990-KA2 TYPICAL SECTION
 TYPE "D" LID w/ TYPE "X" FRAME



SECTION VIEWS

BOLT SLOT DETAIL

SCALE 1:4



BOLT DETAIL
 SCALE 1:4
 USE BOLT KIT #97575

COMPONENT NOS.: SIDE PC. FRAME 4999-2420;
 END PC. FRAME 4990-3233; LID 4999-2344
 MATERIAL: SIDE PC. FRAMES - CAST GRAY IRON ASTM A-48, CLASS 35A,
 END PC. FRAMES - CAST GRAY IRON ASTM A-48, CLASS 35B,
 LIDS - CAST DUCTILE IRON ASTM A-536, 55 + KSI YIELD
 FINISH: NO PAINT

CAD DWG. REF: 4990KA2DB.DWG- 1

DR.	E. NIVER	SCALE	1"=1'-0"	TITLE	R-4990-KA2 AIRPORT LIDS AND FRAMES BOLTED
CH.	RKB				TYPE 'D' LIDS AND FRAMES w/ DEBRIS CHUTES
APP.	SPT				
DATE	06-11-2015				
	www.nfco.com				
	NEENAH FOUNDRY				
	NEENAH WISCONSIN 54956 PHONE 900-558-5075 LINCOLN, NEBRASKA 68529 PHONE 900-234-7466				
					NF-4990KA2DB
					B

R-4990 Airport, Port & Heavy Industrial Series

BOLTED TRENCH FOR EXTRA HEAVY DUTY APPLICATIONS

These trench drains are capable of supporting the heavy wheel loads of today's commercial environments. For larger trench widths or greater loading requirements, please contact our Product Engineering Department.

Grates are bolted to gray iron frames.

For suggested forming procedures, see page 285.

Suitable for aircraft loading per FAA Advisory Circular AC150/5320-6D.

Catalog No.	A	B	C	Grate Matl.
R-4990-AA	8	2	6	Gray Iron
R-4990-BA	10	2	8	Gray Iron
R-4990-CA	12	2	10	Ductile Iron
R-4990-DA * **	14	2	12	Ductile Iron
R-4990-EA *	17	2	15	Ductile Iron
R-4990-FA *	20	2	18	Ductile Iron
R-4990-HA *	26	2	24	Ductile Iron
R-4990-KA2 *	34	2	31	Ductile Iron
R-4990-OA *	51	2	48	Ductile Iron

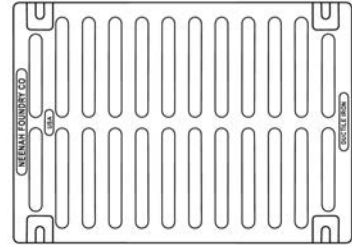
* Type D solid cover available.

** Type C grate available.

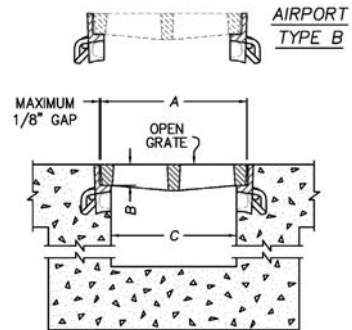
Gray iron furnished per ASTM-A48 Class 35B.

Ductile Iron furnished per ASTM A536 Grade 80-55-06.

These grates are also available with superior duty R-4993 & R-4994 frames as shown on page 287.



TYPE 'A'
GRATE OPENINGS



Supplied By:

**TRENCHDRAIN
SUPPLY**

877-903-7246

www.trenchdrainsupply.com